

Valley of Hope Interpretive Centre

a valley of hope within a valley of hope. the place that tells story from the lepers but no others. this interpretive centre offers an experiential journey that reflects the history, life and emotions of the Valley of Hope as time passes.

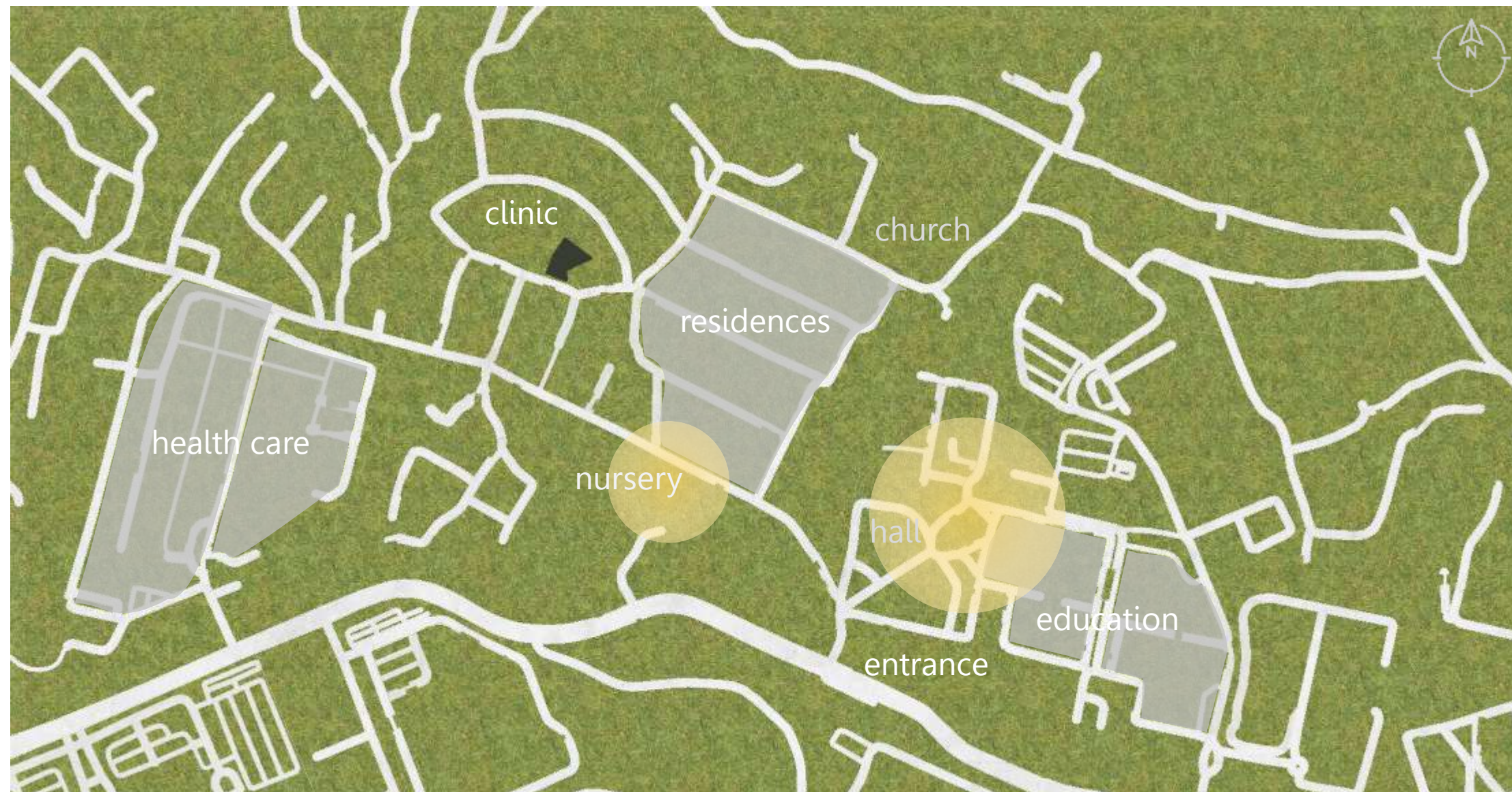


Project 2b : Interpretive Center – Valley of Hope

Yee Cheng Yung | 0334951 | Architectural Design III | March Semester 2020



site context



place
people
culture

clinic site

Valley of Hope, Sungai Buloh, Selangor

culture

gather at
coffee shop



nursery plantation



ex patients

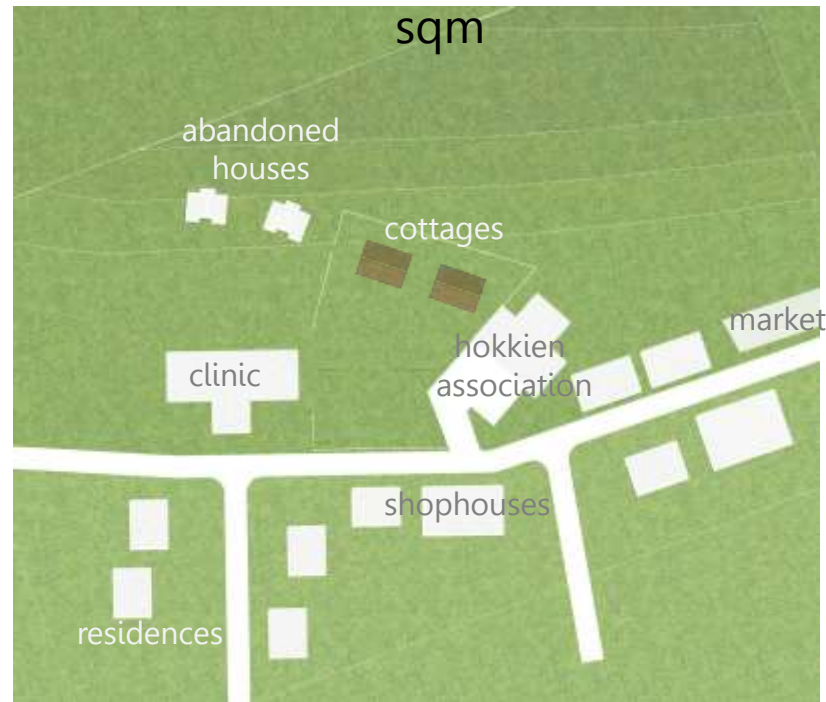


new family household
people

site context – clinic site



site area : 1,159.6
sqm



neighbouring context

*located in between clinic
and the hokkien association*



circulation access

*two-way street that are not
well maintained*



vegetation

*unkept nature behind site
and a huge tree on site*



sun and wind path

*filtered wind by trees from
northeast direction*



views from site

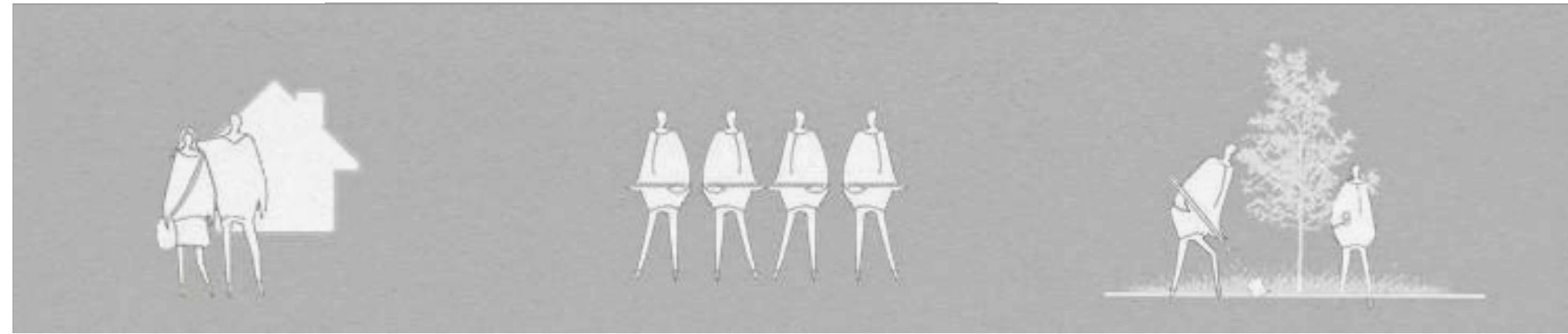
*view towards nature and life
of local residences*



views to site

visible to site on street

2000
rehabilitation
provide a good living
environment to stay
for the rest of their
life in Valley of Hope



permanent

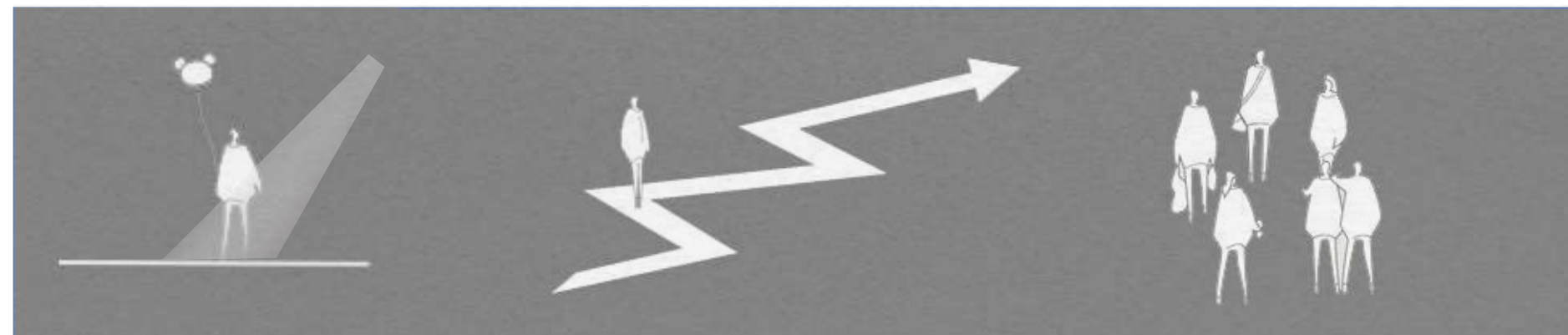
heritage

horticultural

design concept
'life of a leper'

perception shifted

1980
acceptance
the cure for leprosy
had given hope to
the patients to fight
against the disease



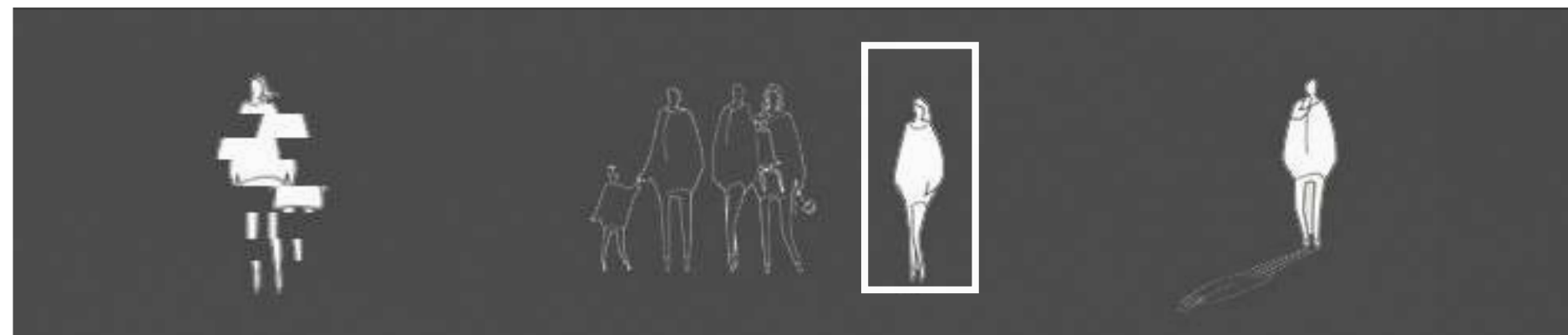
hope

adapt

communal

perception shifted

1930
unknown
walking in to a
leprosarium with fear
and loneliness and
discrimination from
others



disfiguration

segregation

fear



site plan
scale 1 : 500

- 1 clinic
- 2 hokkien association
- 3 abandoned cottage
- 4 morning market
- 5 parking space
- 6 chalets
- 7 shophouses
- 8 nursery

total floor area : 400sqm





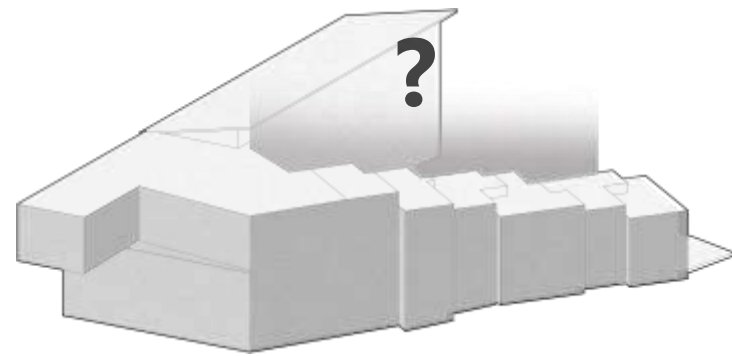
ground floor plan
scale 1 : 200



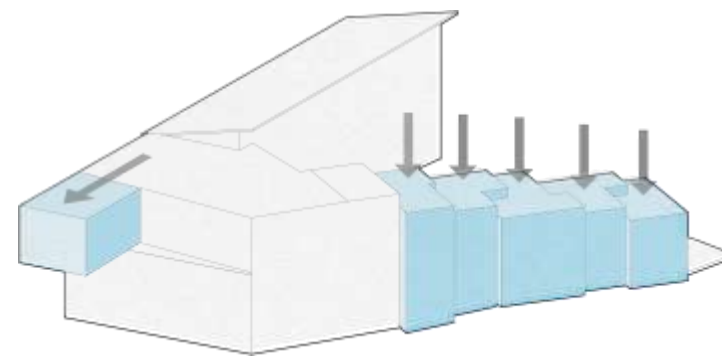
first floor plan
scale 1 : 200



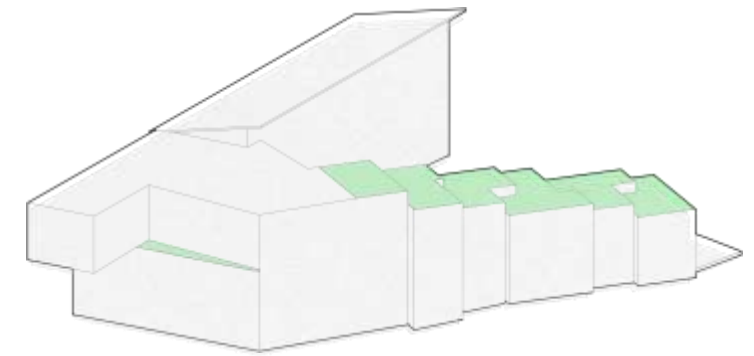
1. reception 2. lounge area 3. gallery 4. storage 5. heritage chalets 6. souvenir shop 7. cafeteria
8. communal garden 9. office 10. utility space 11. toilets 12. courtyard



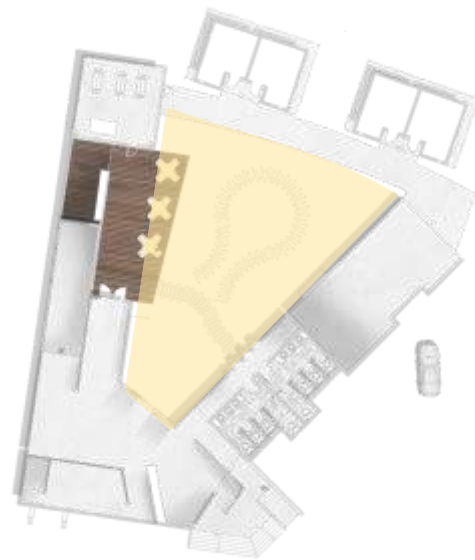
massing
unable to see life within



additive and subtractive
creating imperfection and rhythm



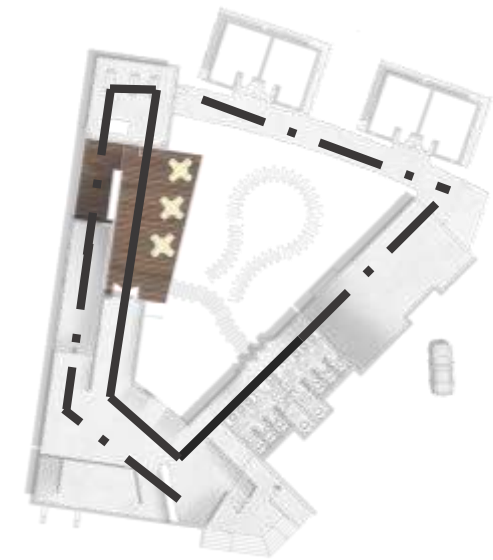
greeneries
green roofs and balconies



spatial typologies
concentric courtyard



views
inside out visual



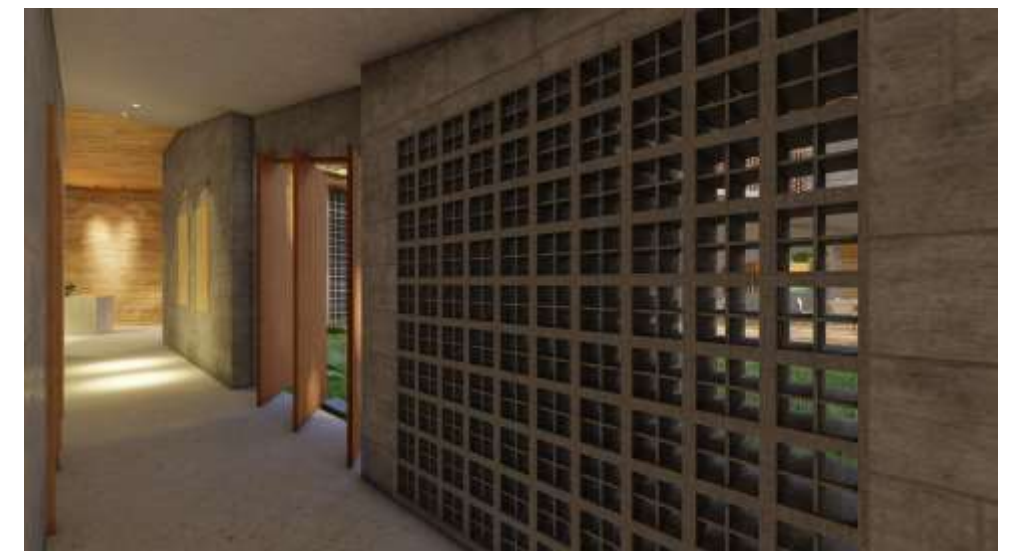
circulation
journey that travels in a circular and erratic motion

diagrams



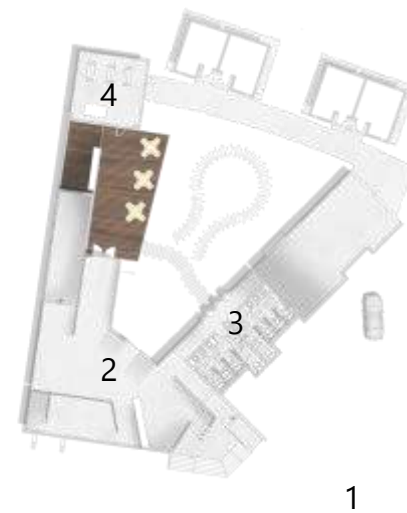
1. entrance

strong façade that reflects the boundary of valley of hope to the outside world



3. toilet area

descending space that creates



1



2. reception and lounge area

an enclosed space that the user feel unknown and curious to explore the space



4. gallery ramp 1

an expansion of space and light while entering the gallery space



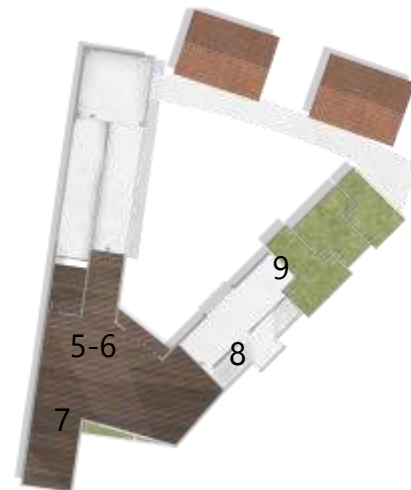
5. exhibition space
strong façade that reflects the boundary of valley of hope to the outside world



6. sharing bubble
a sharing session for patients and visitors to connect through stories



7. window of hope
a calm view towards nature



8. gallery ramp 2
claustrophobic walkway that represents the sense of trap

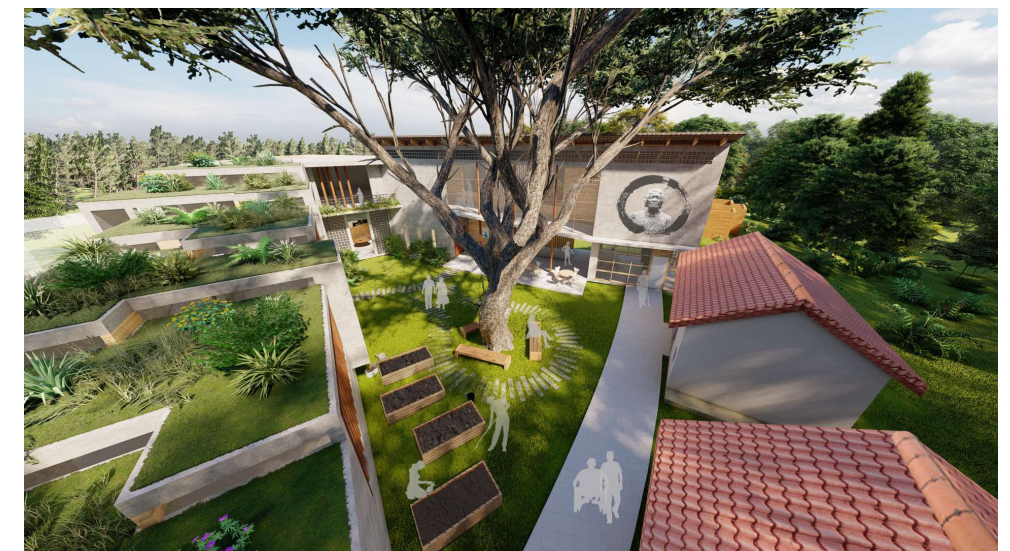


9. gallery ramp 3
a wider walkway that shows happiness and adaptation towards life and their disabilities.



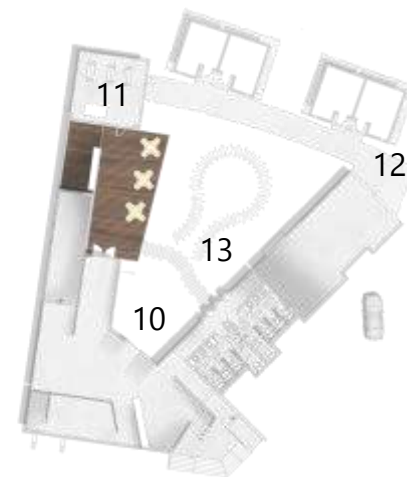
10. heritage chalet

heritage chalets that provide a virtual experience for user to feel the life of a leper within their home



12. courtyard

a courtyard that pushes the spirit of community through the communal garden



11. souvenir shop

open concept souvenir shop that sells local merchandises; plants and potteries



13. courtyard

a small trial that allows the user to have a short rip to the washroom from the cafe



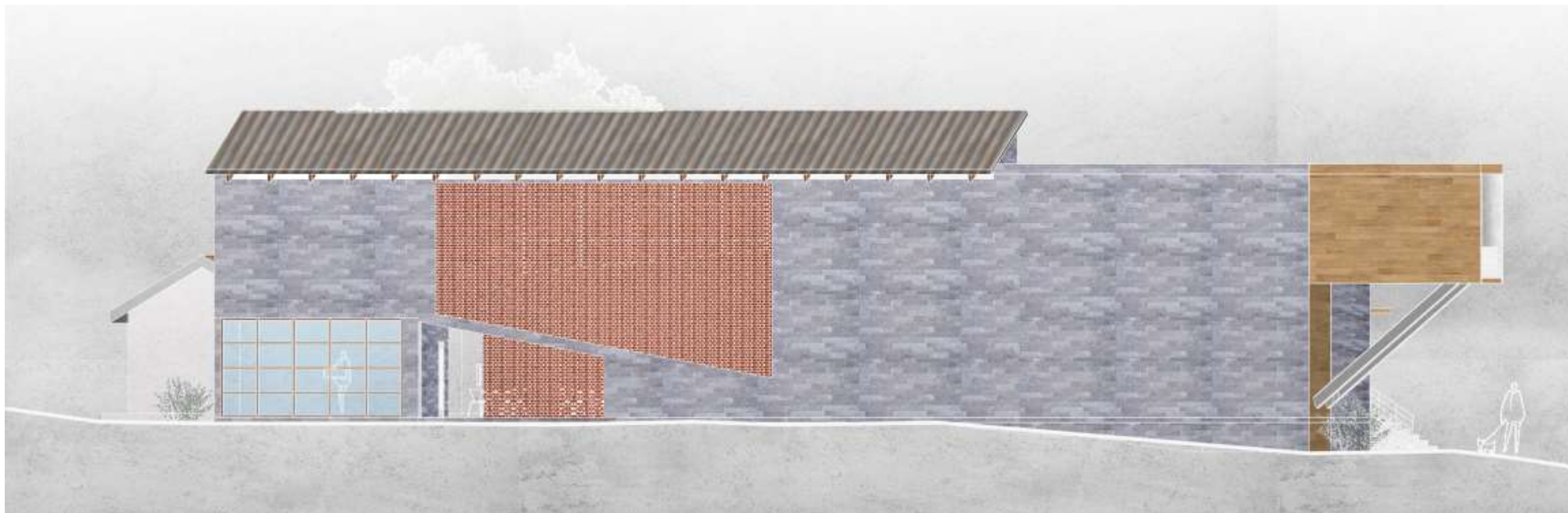
north elevation
scale 1 : 150



east elevation
scale 1 : 150



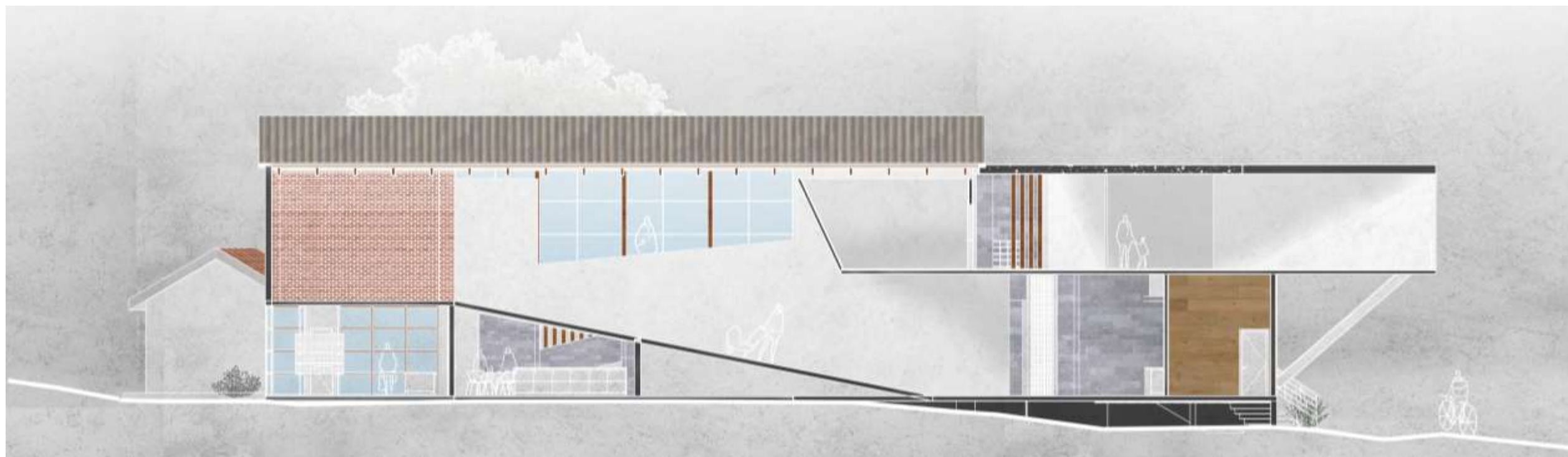
south elevation
scale 1 : 150



west elevation
scale 1 : 150



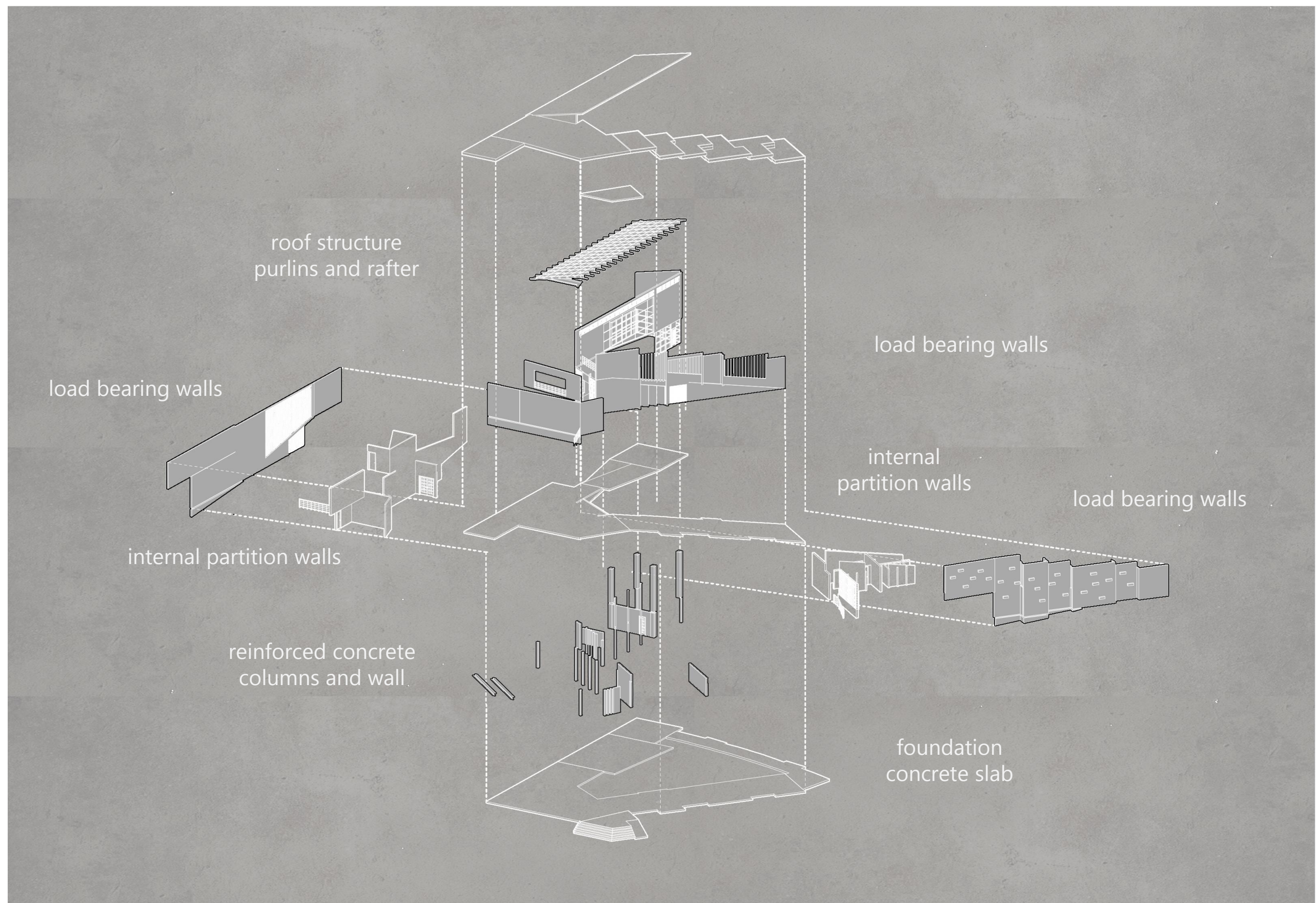
section a – a'
scale 1 : 150



section b – b'
scale 1 : 150



Thank you



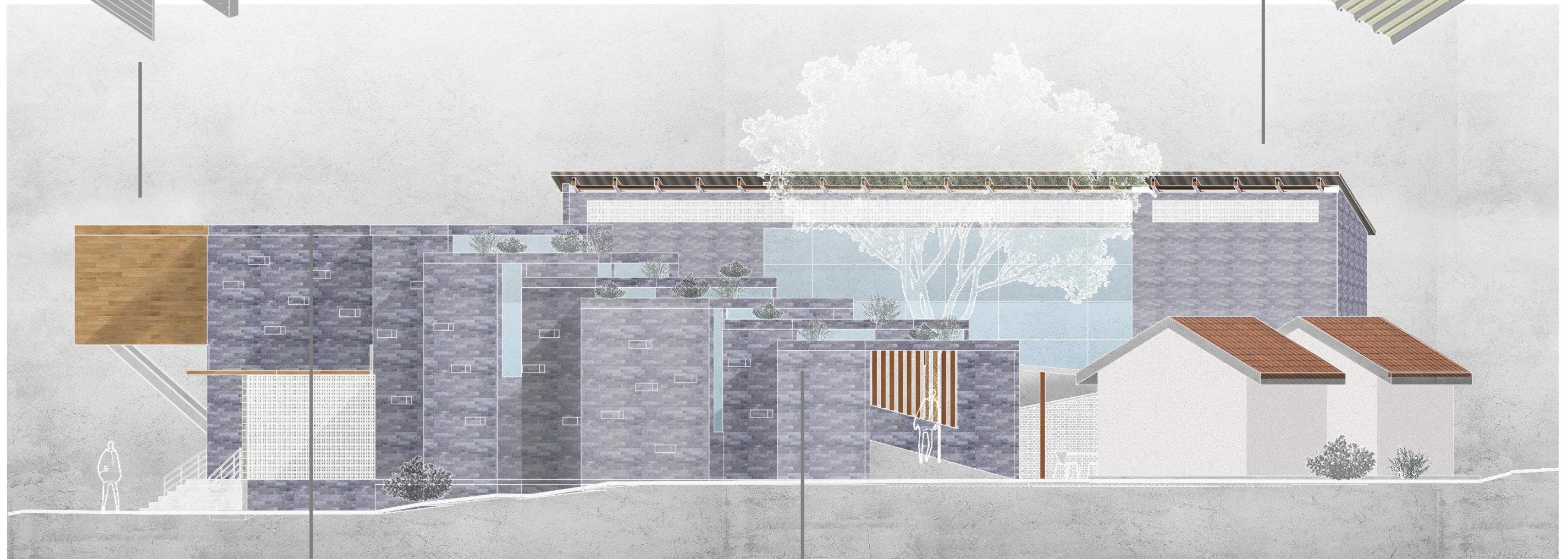
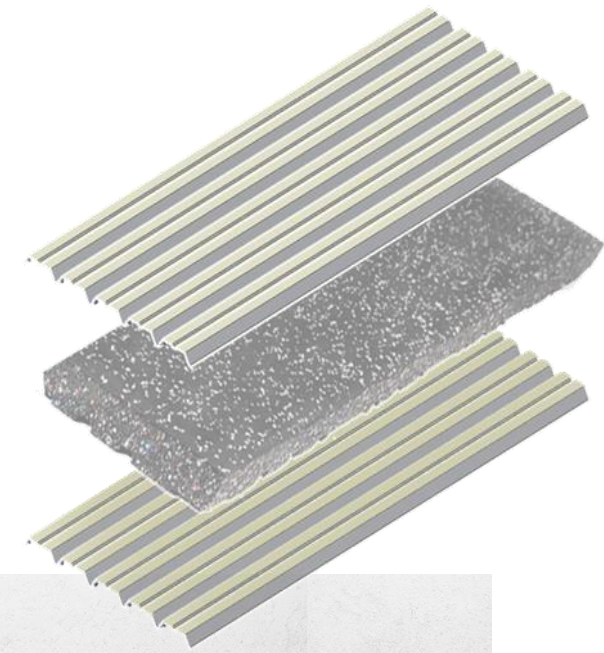
exploded axonometric

wood plank finishing

*pop-out extrusion with a different material
of a wooden plank material finishing*

metallic roof

*metal shingles roofing with
poly bubble insulation sheet
in between the roofs*

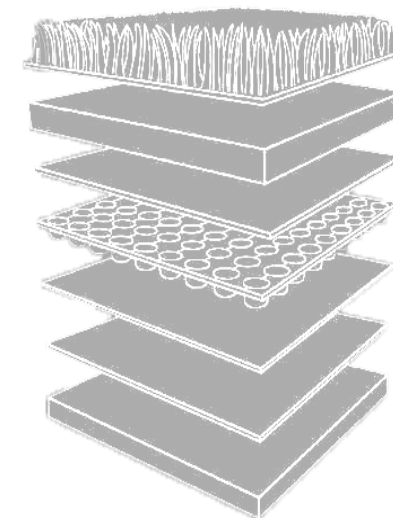


green roof

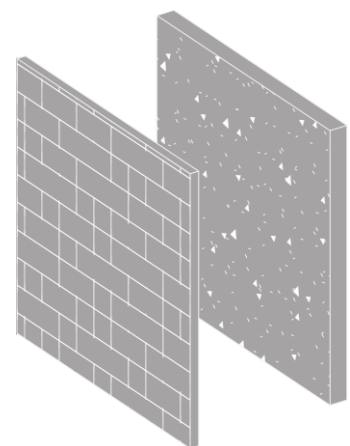
building's material & finishes

stone cladding facade

*stone veneer finishing that
covers the exterior of the
building*



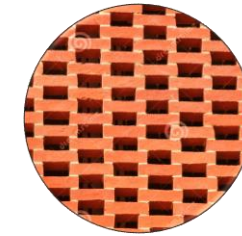
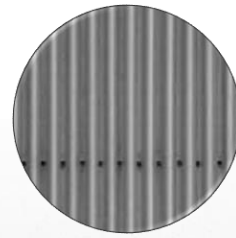
*sedum/ plant
substrate/ soil
filter fabric
drainage & storage membrane
root barrier sealing
waterproofing compound
concrete slab*



green roof
help cools down
interior spaces and
reduce energy
consumption



metallic roof
metallic roofs enables the surface to reflect
heat during the evening Thus, reducing the
interior thermal mass



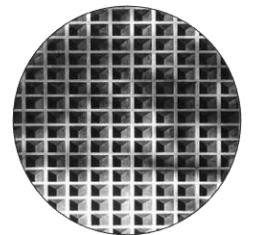
brick design
the brick facade are
constructed by leaving a 10cm
gap respectively to allow air
and light passes through



cascading roof height
allow north-wind to seeps
into the centre of building

courtyard
trapping wind into the
courtyard creating an air
pocket that releases hot air
upwards

vent block
allows air to exhaust out of the building
creating a cross ventilation



passive design strategies